

Review Problems for the Final

These problems are intended to help you study for the final. However, you shouldn't assume that each problem on this handout corresponds to a problem on the final. Nor should you assume that if a topic *doesn't* appear here, it *won't* appear on the final.

1. Compute the following derivatives:

(a) $\frac{d}{dx} \left(\frac{x}{(2x+1)^2} \right)$

(b) $\frac{d}{dx} (\ln(e^x + 1) + e^{\ln x + 1})$

(c) $\frac{d}{dx} \ln[1 + \ln(1 + \ln x)]$

(d) $\frac{d}{dx} 7^{\sin x}$

(e) $\frac{d}{dx} \sin \left(\frac{x^2 + 2}{x^2 + 3} \right)$

(f) $\frac{d}{dx} \sqrt{\frac{\cos x + 2}{\sin x + 4}}$

(g) $\frac{d}{dx} (x^5 + 4x^3 - \ln x)(\sin x + 37)$

(h) $\frac{d}{dx} \sqrt{(x^3 + 5x + 1)^7 + x}$

(i) $\frac{dy}{dx}$, where $x \sin y - \cos y + \cos 2y = 0$.

(j) $\frac{dy}{dx}$, where $y = (e^x + 2)^{x^2 + 3}$.

(k) y'' when $x = 1$ and $y = 1$, where $x^2 y^3 - x^3 = x + y - 2$.

2. Prove that $e^x > 1 + x$ for $x \neq 0$.

3. Find the dimensions of the rectangle with the largest possible perimeter that can be inscribed in a semicircle of radius 1.

4. Graph $y = 3x^{5/3} - \frac{3}{8}x^{8/3}$.

5. In the following problems, compute the limit, or show that it is undefined.

(a) $\lim_{x \rightarrow 0} \frac{\sin 3x - \sin 5x}{\sin 2x}$

(b) $\lim_{x \rightarrow \infty} \frac{4x + \sqrt{x^2 + 1}}{3x + 7}$

(c) $\lim_{h \rightarrow 0} \frac{(x+h)^{50} - x^{50}}{h}$

(d) $\lim_{x \rightarrow 4} \frac{x^2 - 3x - 4}{x^2 - 16}$

(e) $\lim_{x \rightarrow 4^+} \sqrt{16 - x^2}$

(f) $\lim_{x \rightarrow 4} \frac{x^2 - 3x - 4}{x^2 - 8x + 16}$

6. Compute the following integrals.

(a) $\int (e^{2x} + e^{3x})^2 dx$

(b) $\int \frac{2x+3}{(x+1)^4} dx$

(c) $\int \frac{e^{2x}}{e^{2x}+1} dx$

(d) $\int \frac{3(\ln x)^2 + 1}{x} dx$

(e) $\int \frac{\cos x}{(\sin x)^2 + 2 \sin x + 1} dx$

(f) $\int \frac{x^2 + x}{\sqrt[3]{2 - 3x^2 - 2x^3}} dx$

(g) $\int \frac{(\sec x^{1/3})^2}{x^{2/3}} dx$

(h) $\int_0^1 \frac{x \ln(x^2 + 1)}{x^2 + 1} dx$

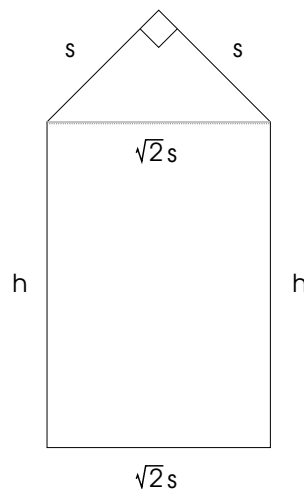
7. A population of flamingo lawn ornaments grows exponentially in Calvin's yard. There are 20 after 1 day and 60 after 4 days. How many are there after 6 days?

8. Find the area of the region in the first quadrant bounded on the left by $y = x^2$, on the right by $x + y = 2$, and below by the x -axis.

9. Approximate $\frac{1}{1^2+3} + \frac{2}{2^2+3} + \frac{3}{3^2+3} + \dots + \frac{40}{40^2+3}$ to 5 decimal places.

10. Calvin runs south toward Phoebe's house at 2 feet per second. Bonzo runs east away from Phoebe's house at 5 feet per second. At what rate is the distance between Calvin and Bonzo changing when Calvin is 50 feet from the house and Bonzo is 120 feet from the house? Speculate about the story behind this situation, drawing on your own experience in these matters.

11. A window is made in the shape of a rectangle with an isosceles right triangle on top.



(a) Write down an expression for the *total area* of the window.

- (b) Write down an expression for the *perimeter* of the window (that is, the length of the *outside* edge).
 (c) If the perimeter is given to be 4, what value of s makes the total area a maximum?
12. Find the absolute max and the absolute min of

$$f(x) = \frac{3}{4}x^{4/3} - 15x^{1/3} \quad \text{on the interval} \quad -1 \leq x \leq 8.$$

13. Use a limit of a rectangle sum to find the exact area under $y = x^2 + 3x$ from $x = 0$ to $x = 1$.
 14. $f(x) = x^5 + 4x^3 + 17$, so $f(1) = 22$. What is $(f^{-1})'(22)$?
 15. Use the definition of the derivative as a limit to prove that $\frac{d}{dx} \frac{1}{x-4} = -\frac{1}{(x-4)^2}$.

16. Let

$$f(x) = \begin{cases} \frac{x+3}{6-x} & \text{if } x < 1 \\ 0.9 & \text{if } x = 1 \\ 3x^2 - 2.2 & \text{if } x > 1 \end{cases}.$$

Is f continuous at $x = 1$? Why or why not?

17. (a) Compute $\frac{d}{dx} \int_4^{x^6} \sqrt{2+t^2} dt$.

(b) Compute $\int \left(\frac{d}{dx} \sqrt[3]{x^2+1} \right) dx$.

18. (a) Suppose that $f(3) = 5$ and $f'(x) = \frac{x^2}{x^2+16}$. Use differentials to approximate $f(2.99)$ to 5 places.

- (b) A differentiable function satisfies $\frac{dy}{dx} = e^x \cos 3x$ and $y(0) = 0.1$. Use differentials to approximate $y(0.02)$.

19. Approximate the sum

$$\frac{3 + \sin 2}{1^2 + 1} + \frac{3 + \sin 3}{2^2 + 2} + \frac{3 + \sin 4}{3^2 + 3} + \cdots + \frac{3 + \sin 41}{40^2 + 40}$$

to 5 decimal places.

20. Use 3 iterations of Newton's method starting at $x = 2$ to approximate a solution to $4 - x^2 = e^x$.

21. Find the absolute max and the absolute min of $y = x^3 - 12x + 5$ on the interval $0 \leq x \leq 5$.

Solutions to the Review Problems for the Final

1. (a)
$$\frac{d}{dx} \left(\frac{x}{(2x+1)^2} \right) = \frac{(2x+1)^2(1) - (x)(2)(2x+1)(2)}{(2x+1)^4}. \quad \square$$

$$(b) \quad \frac{d}{dx} (\ln(e^x + 1) + e^{\ln x + 1}) = \frac{e^x}{e^x + 1} + \left(\frac{1}{x}\right) (e^{\ln x + 1}). \quad \square$$

$$(c) \quad \frac{d}{dx} \ln[1 + \ln(1 + \ln x)] = \left(\frac{1}{1 + \ln(1 + \ln x)}\right) \left(\frac{1}{1 + \ln x}\right) \left(\frac{1}{x}\right). \quad \square$$

$$(d) \quad \frac{d}{dx} 7^{\sin x} = (\ln 7)(7^{\sin x})(\cos x). \quad \square$$

$$(e) \quad \frac{d}{dx} \sin\left(\frac{x^2 + 2}{x^2 + 3}\right) = \left(\cos\left(\frac{x^2 + 2}{x^2 + 3}\right)\right) \left(\frac{(x^2 + 3)(2x) - (x^2 + 2)(2x)}{(x^2 + 3)^2}\right). \quad \square$$

$$(f) \quad \frac{d}{dx} \sqrt{\frac{\cos x + 2}{\sin x + 4}} = \frac{1}{2} \left(\frac{\cos x + 2}{\sin x + 4}\right)^{-1/2} \left(\frac{(\sin x + 4)(-\sin x) - (\cos x + 2)(\cos x)}{(\sin x + 4)^2}\right). \quad \square$$

$$((g) \quad \frac{d}{dx} (x^5 + 4x^3 - \ln x)(\sin x + 37) = (x^5 + 4x^3 - \ln x)(\cos x) + (\sin x + 37) \left(5x^4 + 12x^2 - \frac{1}{x}\right). \quad \square$$

$$(h) \quad \frac{d}{dx} \sqrt{(x^3 + 5x + 1)^7 + x} = \frac{1}{2} ((x^3 + 5x + 1)^7 + x)^{-1/2} (7(x^3 + 5x + 1)^6(3x^2 + 5) + 1). \quad \square$$

(i) $\frac{dy}{dx}$, where $x \sin y - \cos y + \cos 2y = 0$.

Differentiate implicitly, then solve for y' :

$$\sin y + xy' \cos y + y' \sin y - 2y' \sin 2y = 0, \quad y' = \frac{\sin y}{2 \sin 2y - x \cos y - \sin y}. \quad \square$$

(j) $\frac{dy}{dx}$, where $y = (e^x + 2)^{x^2+3}$.

Use logarithmic differentiation:

$$\ln y = \ln(e^x + 2)^{x^2+3} = (x^2 + 3) \ln(e^x + 2),$$

$$\frac{y'}{y} = 2x \ln(e^x + 2) + \frac{e^x(x^2 + 3)}{e^x + 2},$$

$$y' = (e^x + 2)^{x^2+3} \left(2x \ln(e^x + 2) + \frac{e^x(x^2 + 3)}{e^x + 2} \right). \quad \square$$

(k) y'' when $x = 1$ and $y = 1$, where $x^2y^3 - x^3 = x + y - 2$.

Differentiate implicitly:

$$3x^2y^2y' + 2xy^3 - 3x^2 = 1 + y'. \quad (*)$$

Plug in $x = 1$ and $y = 1$:

$$3y' + 2 - 3 = 1 + y', \quad 2y' = 2, \quad y' = 1.$$

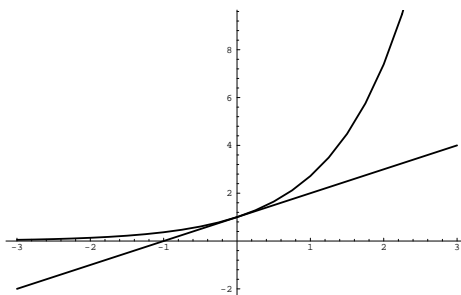
Now differentiate (*) implicitly:

$$3x^2y^2y'' + 6x^2y(y')^2 + 6xy^2y' + 6xy^2y' + 2y^3 - 6x = y''.$$

Note that the term $3x^2y^2y'$ produces *three* terms when the Product Rule is applied. Now set $x = 1$, $y = 1$, and $y' = 1$:

$$3y'' + 6 + 6 + 6 + 2 - 6 = y'', \quad 2y'' + 14 = 0, \quad y'' = -7. \quad \square$$

2. Prove that $e^x > 1 + x$ for $x \neq 0$.



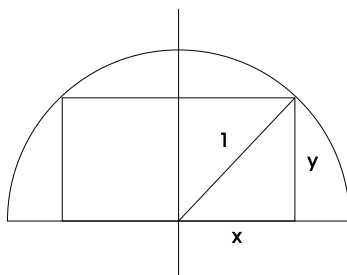
The result is true, as the picture shows. However, a picture is not a proof.

Let $f(x) = e^x - (1 + x)$. f measures the distance between the two curves. The derivative is $f'(x) = e^x - 1$. $f' = 0$ at $x = 0$; since $f''(x) = e^x$ and $f''(0) = 1 > 0$, the critical point is a local min. Since it is the only critical point, it is an absolute min.

Thus, the minimum vertical distance between the curves occurs at $x = 0$, when it is $f(0) = 0$. Since this is an absolute min, it follows that $f(x) > 0$ for $x \neq 0$ — that is, $e^x - (1 + x) > 0$ for $x \neq 0$. This is equivalent to what I wanted to show. \square

3. Find the dimensions of the rectangle with the largest possible perimeter that can be inscribed in a semicircle of radius 1.

Draw a picture. Label the quantities that are relevant to the problem.



The height of the rectangle is y ; the width is $2x$.

Write down an expression for the thing you're trying to maximize. The perimeter of the rectangle is

$$p = 4x + 2y.$$

Use other information in the problem to express the thing you're trying to maximize in terms of a single variable.

By Pythagoras, $x^2 + y^2 = 1$, so $y = \sqrt{1 - x^2}$. Therefore,

$$p = 4x + 2\sqrt{1 - x^2}.$$

Find any endpoints by considering extreme cases.

$x = 1$ gives a "flat" rectangle lying along the diameter of the semicircle. $x = 0$ gives a "thin" rectangle lying along the vertical radius.

$\frac{dp}{dx} = 4 - \frac{2x}{\sqrt{1 - x^2}}$, so $\frac{dp}{dx} = 0$ for $x = \frac{2}{\sqrt{5}}$. (The negative root does not lie in the interval $0 \leq x \leq 1$.)

x	0	$\frac{2}{\sqrt{5}}$	1
p	2	$2\sqrt{5}$	4
		max	

$x = \frac{2}{\sqrt{5}}$ gives $y = \frac{1}{\sqrt{5}}$. The dimensions of the rectangle with the largest perimeter are $2x = \frac{4}{\sqrt{5}}$ and $y = \frac{1}{\sqrt{5}}$; the maximum perimeter is $p = 2\sqrt{5} \approx 4.47214$. \square

4. Graph $y = 3x^{5/3} - \frac{3}{8}x^{8/3}$.

The function is defined for all x (you can take the cube root of any number).

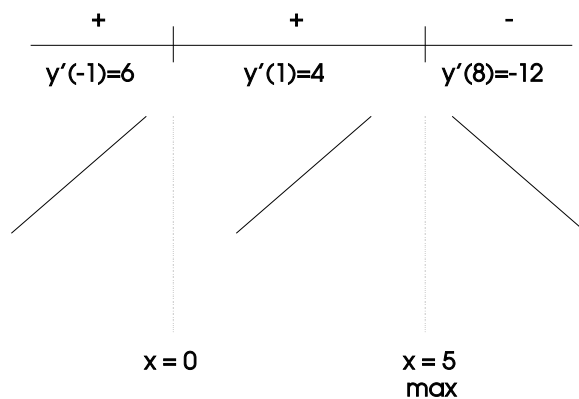
Since $y = 3x^{5/3} \left(1 - \frac{1}{8}x\right)$, the x -intercepts are $x = 0$ and $x = 8$. The y -intercept is $y = 0$.

The derivatives are

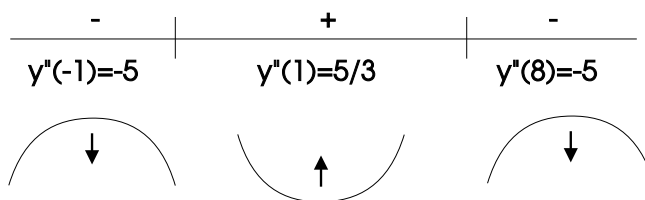
$$y' = 5x^{2/3} - x^{5/3} = x^{2/3}(5 - x), \quad y'' = \frac{10}{3}x^{-1/3} - \frac{5}{3}x^{2/3} = \frac{5}{3} \cdot \frac{2 - x}{x^{1/3}}.$$

(In working with these kinds of expressions, it is better to have a sum of terms when you're differentiating. On the other hand, it is better to have everything together in factored form when you set up the sign charts. Notice how I used these two forms in the derivatives above.)

$y' = 0$ for $x = 0$ and at $x = 5$. y' is defined for all x .



The function increases for $x \leq 5$ and decreases for $x \geq 5$. There is a local max at $x = 5$, $y \approx 16.44760$. $y'' = 0$ at $x = 2$. y'' is undefined at $x = 0$.

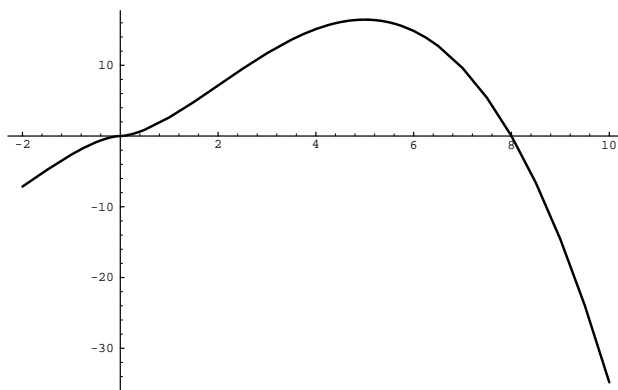


The graph is concave down for $x < 0$ and for $x > 2$. The graph is concave up for $0 < x < 2$. $x = 0$ and $x = 2$ are inflection points.

Since the function is defined for all x , there are no vertical asymptotes.

$$\lim_{x \rightarrow +\infty} \left(3x^{5/3} - \frac{3}{8}x^{8/3} \right) = -\infty \quad \text{and} \quad \lim_{x \rightarrow -\infty} \left(3x^{5/3} - \frac{3}{8}x^{8/3} \right) = -\infty.$$

The graph goes downward on the far left and far right.



5. In the following problems, compute the limit, or show that it is undefined.

$$(a) \lim_{x \rightarrow 0} \frac{\sin 3x - \sin 5x}{\sin 2x}$$

$$\lim_{x \rightarrow 0} \frac{\sin 3x - \sin 5x}{\sin 2x} = \lim_{x \rightarrow 0} \frac{\frac{\sin 3x}{x} - \frac{\sin 5x}{x}}{\frac{\sin 2x}{x}} = \lim_{x \rightarrow 0} \frac{3 \cdot \frac{\sin 3x}{3x} - 5 \cdot \frac{\sin 5x}{5x}}{2 \cdot \frac{\sin 2x}{2x}} = \frac{3 - 5}{2} = -1. \quad \square$$

$$(b) \lim_{x \rightarrow \infty} \frac{4x + \sqrt{x^2 + 1}}{3x + 7}$$

$$\lim_{x \rightarrow \infty} \frac{4x + \sqrt{x^2 + 1}}{3x + 7} = \lim_{x \rightarrow \infty} \frac{4 + \sqrt{1 + \frac{1}{x^2}}}{3 + \frac{7}{x}} = \frac{4 + 1}{3 + 0} = \frac{5}{3}. \quad \square$$

$$(c) \lim_{h \rightarrow 0} \frac{(x+h)^{50} - x^{50}}{h}$$

$$\lim_{h \rightarrow 0} \frac{(x+h)^{50} - x^{50}}{h} = f'(x),$$

for $f(x) = x^{50}$. Hence, by the Power Rule,

$$\lim_{h \rightarrow 0} \frac{(x+h)^{50} - x^{50}}{h} = 50x^{49}. \quad \square$$

$$(d) \lim_{x \rightarrow 4} \frac{x^2 - 3x - 4}{x^2 - 16}$$

$$\lim_{x \rightarrow 4} \frac{x^2 - 3x - 4}{x^2 - 16} = \lim_{x \rightarrow 4} \frac{(x+1)(x-4)}{(x-4)(x+4)} = \lim_{x \rightarrow 4} \frac{x+1}{x+4} = \frac{5}{8}. \quad \square$$

$$(e) \lim_{x \rightarrow 4^+} \sqrt{16 - x^2}$$

For x close to 4 but larger than 4 — e.g. $x = 4.01$ — $16 - x^2$ is negative. Since the square root of a negative number is undefined, the limit is undefined. \square

$$(f) \lim_{x \rightarrow 4} \frac{x^2 - 3x - 4}{x^2 - 8x + 16}$$

$$\lim_{x \rightarrow 4} \frac{x^2 - 3x - 4}{x^2 - 8x + 16} = \lim_{x \rightarrow 4} \frac{(x-4)(x+1)}{(x-4)^2} = \lim_{x \rightarrow 4} \frac{x+1}{x-4}.$$

Plugging in gives $\frac{5}{0}$; the limit is undefined. \square

$$6. (a) \int (e^{2x} + e^{3x})^2 dx$$

$$\int (e^{2x} + e^{3x})^2 dx = \int (e^{4x} + 2e^{5x} + e^{6x}) dx = \frac{1}{4}e^{4x} + \frac{2}{5}e^{5x} + \frac{1}{6}e^{6x} + C. \quad \square$$

(b) $\int \frac{2x+3}{(x+1)^4} dx$

$$\int \frac{2x+3}{(x+1)^4} dx = \int \frac{2(u-1)+3}{u^4} du = \int \frac{2u+1}{u^4} du = \int \left(\frac{2}{u^3} + \frac{1}{u^4} \right) du =$$

$$[u = x+1, \quad du = dx, \quad x = u-1]$$

$$-\frac{1}{u^2} - \frac{1}{3u^3} + C = -\frac{1}{(x+1)^2} - \frac{1}{3(x+1)^3} + C. \quad \square$$

(c) $\int \frac{e^{2x}}{e^{2x}+1} dx$

$$\int \frac{e^{2x}}{e^{2x}+1} dx = \int \frac{ue^x}{u^2+1} \cdot \frac{du}{e^x} = \int \frac{u}{u^2+1} du.$$

$$\left[u = e^x, \quad du = e^x dx, \quad dx = \frac{du}{e^x} \right]$$

Note that in making the substitution I used *one* of the e^x 's on the top to make a u , and left the other to be cancelled: $e^{2x} = e^x \cdot e^x = ue^x$.

I need one more substitution to finish:

$$\int \frac{u}{u^2+1} du = \int \frac{u}{w} \cdot \frac{dw}{2u} = \frac{1}{2} \int \frac{dw}{w} = \frac{1}{2} \ln|w| + C = \frac{1}{2} \ln|u^2+1| + C = \frac{1}{2} \ln|e^{2x}+1| + C. \quad \square$$

$$\left[w = u^2+1, \quad dw = 2u du, \quad du = \frac{dw}{2u} \right]$$

(d) $\int \frac{(3 \ln x)^2 + 1}{x} dx$

$$\int \frac{(3 \ln x)^2 + 1}{x} dx = \int \frac{3u^2 + 1}{x} \cdot x du = \int (3u^2 + 1) du = u^3 + u + C = (\ln x)^3 + \ln x + C. \quad \square$$

$$\left[u = \ln x, \quad du = \frac{dx}{x}, \quad dx = x du \right]$$

(e) $\int \frac{\cos x}{(\sin x)^2 + 2 \sin x + 1} dx$

$$\int \frac{\cos x}{(\sin x)^2 + 2 \sin x + 1} dx = \int \frac{\cos x}{u^2 + 2u + 1} \cdot \frac{du}{\cos x} = \int \frac{du}{u^2 + 2u + 1} =$$

$$\left[u = \sin x, \quad du = \cos x dx, \quad dx = \frac{du}{\cos x} \right]$$

$$\int \frac{du}{(u+1)^2} = -\frac{1}{u+1} + C = -\frac{1}{\sin x + 1} + C. \quad \square$$

(f) $\int \frac{x^2 + x}{\sqrt[3]{2 - 3x^2 - 2x^3}} dx$

$$\int \frac{x^2 + x}{\sqrt[3]{2 - 3x^2 - 2x^3}} dx = \int \frac{x^2 + x}{\sqrt[3]{u}} \cdot \frac{du}{-6(x^2 + x)} = -\frac{1}{6} \int u^{-1/3} du =$$

$$\left[u = 2 - 3x^2 - 2x^3, \quad du = (-6x - 6x^2) dx, \quad dx = \frac{du}{-6(x^2 + x)} \right]$$

$$-\frac{1}{6} \cdot \frac{3}{2} u^{2/3} + C = -\frac{1}{4} (2 - 3x^2 - 2x^3)^{2/3} + C. \quad \square$$

(g) $\int \frac{(\sec x^{1/3})^2}{x^{2/3}} dx$

$$\int \frac{(\sec x^{1/3})^2}{x^{2/3}} dx = \int \frac{(\sec u)^2}{x^{2/3}} \cdot 3x^{2/3} du = 3 \int (\sec u)^2 du = 3 \tan u + C = 3 \tan x^{1/3} + C.$$

$$\left[u = x^{1/3}, \quad du = \frac{1}{3} x^{-2/3} dx, \quad dx = 3x^{2/3} du \right] \quad \square$$

(h) $\int_0^1 \frac{x \ln(x^2 + 1)}{x^2 + 1} dx$

$$\int_0^1 \frac{x \ln(x^2 + 1)}{x^2 + 1} dx = \int_1^2 \frac{x \ln u}{u} \cdot \frac{du}{2x} =$$

$$\left[u = x^2 + 1, \quad du = 2x dx, \quad dx = \frac{du}{2x}; \quad x = 0, u = 1; \quad x = 1, u = 2 \right]$$

$$\frac{1}{2} \int_1^2 \frac{\ln u}{u} du = \frac{1}{2} \int_0^{\ln 2} \frac{w}{u} \cdot u dw = \frac{1}{2} \int_0^{\ln 2} w dw = \frac{1}{2} \left[\frac{1}{2} w^2 \right]_0^{\ln 2} = \frac{1}{4} (\ln 2)^2 \approx 0.12011.$$

$$\left[w = \ln u, \quad dw = \frac{du}{u}, \quad du = u dw; \quad u = 1, w = 0; \quad u = 2, w = \ln 2 \right] \quad \square$$

7. A population of flamingo lawn ornaments grows exponentially in Calvin's yard. There are 20 after 1 day and 60 after 4 days. How many are there after 6 days?

Let F be the number of flamingos after t days. Then

$$F = F_0 e^{kt}.$$

When $t = 1$, $F = 20$:

$$20 = F_0 e^k.$$

When $t = 4$, $F = 60$:

$$60 = F_0 e^{4k}.$$

Divide $60 = F_0 e^{4k}$ by $20 = F_0 e^k$ and solve for k :

$$\frac{60}{20} = \frac{F_0 e^{4k}}{F_0 e^k}, \quad 3 = e^{3k}, \quad \ln 3 = \ln e^{3k} = 3k, \quad k = \frac{\ln 3}{3}.$$

Plug this back into $20 = F_0 e^k$:

$$20 = F_0 e^{(\ln 3)/3}, \quad F_0 = \frac{20}{e^{(\ln 3)/3}}.$$

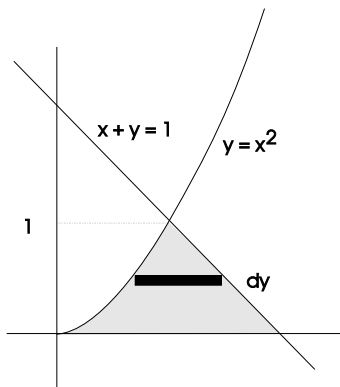
Hence,

$$F = \frac{20}{e^{(\ln 3)/3}} e^{(t \ln 3)/3}.$$

When $t = 6$,

$$F = \frac{20}{e^{(\ln 3)/3}} e^{2 \ln 3} \approx 124.80503. \text{ flamingos} \square$$

8. Find the area of the region in the first quadrant bounded on the left by $y = x^2$, on the right by $x + y = 2$, and below by the x -axis.



The curves intersect at the point $x = 1$, $y = 1$. (You can see this by solving $y = x^2$ and $x + y = 2$ simultaneously.)

Divide the region up into horizontal rectangles. A typical rectangle has width dy . The *right* end of a rectangle is on $x = 2 - y$; the *left* end of a rectangle is on $x = \sqrt{y}$ (i.e. $y = x^2$). Therefore, the length of a rectangle is $2 - y - \sqrt{y}$, and the area of a rectangle is $(2 - y - \sqrt{y}) dy$.

The area is

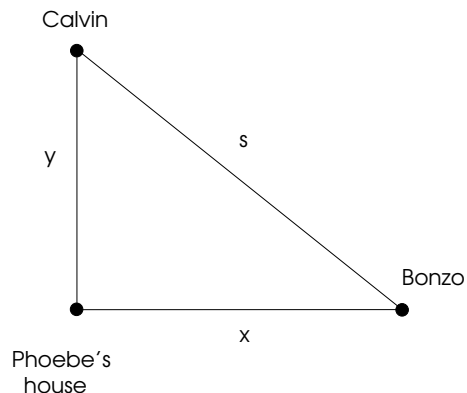
$$A = \int_0^1 (2 - y - \sqrt{y}) dy = \left[2y - \frac{1}{2}y^2 - \frac{2}{3}y^{3/2} \right]_0^1 = \frac{5}{6} \approx 0.83333. \quad \square$$

9. Approximate $\frac{1}{1^2 + 3} + \frac{2}{2^2 + 3} + \frac{3}{3^2 + 3} + \cdots + \frac{40}{40^2 + 3}$ to 5 decimal places.

$$\frac{1}{1^2 + 3} + \frac{2}{2^2 + 3} + \frac{3}{3^2 + 3} + \cdots + \frac{40}{40^2 + 3} = \sum_{n=1}^{40} \frac{n}{n^2 + 3} \approx 3.12400. \quad \square$$

10. Calvin runs south toward Phoebe's house at 2 feet per second. Bonzo runs east away from Phoebe's house at 5 feet per second. At what rate is the distance between Calvin and Bonzo changing when Calvin is 50 feet from the house and Bonzo is 120 feet from the house?

Let x be the distance from Bonzo to the house, let y be the distance from Calvin to the house, and let s be the distance between Calvin and Bonzo.



By Pythagoras,

$$s^2 = x^2 + y^2.$$

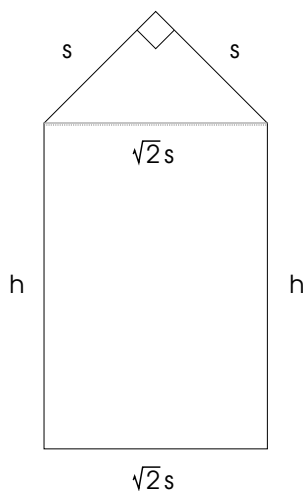
Differentiate with respect to t :

$$2s \frac{ds}{dt} = 2x \frac{dx}{dt} + 2y \frac{dy}{dt}, \quad s \frac{ds}{dt} = x \frac{dx}{dt} + y \frac{dy}{dt}.$$

$\frac{dx}{dt} = 5$ and $\frac{dy}{dt} = -2$ (negative, because his distance from the house is *decreasing*). When $x = 120$ and $y = 50$, $s = 130$. So

$$130 \frac{ds}{dt} = (120)(5) + (50)(-2), \quad \frac{ds}{dt} = \frac{50}{13} \approx 3.84615 \text{ feet per second. } \square$$

11. A window is made in the shape of a rectangle with an isosceles right triangle on top.



(a) Write down an expression for the *total area* of the window.

$$A = \frac{1}{2}s^2 + \sqrt{2}sh. \quad \square$$

(b) Write down an expression for the *perimeter* of the window (that is, the length of the *outside* edge).

$$p = 2h + 2s + \sqrt{2}s. \quad \square$$

(c) If the perimeter is given to be 4, what value of s makes the total area a maximum?

$$\text{Since } 4 = p = 2h + 2s + \sqrt{2}s,$$

$$h = 2 - s - \frac{\sqrt{2}}{2}s.$$

Hence,

$$A = \frac{1}{2}s^2 + \sqrt{2}s \left(2 - s - \frac{\sqrt{2}}{2}s \right) = \frac{1}{2}s^2 + 2\sqrt{2}s - \sqrt{2}s^2 - s^2 = 2\sqrt{2}s - \sqrt{2}s^2 - \frac{1}{2}s^2.$$

The extreme cases are $s = 0$ and $h = 0$, which gives $s = \frac{4}{2 + \sqrt{2}}$.

The derivative is

$$\frac{dA}{ds} = 2\sqrt{2} - 2\sqrt{2}s - s.$$

Find the critical point:

$$0 = 2\sqrt{2} - 2\sqrt{2}s - s, \quad s = \frac{2\sqrt{2}}{2\sqrt{2} + 1}.$$

Plug the critical point and the endpoints into A :

s	0	$\frac{2\sqrt{2}}{2\sqrt{2} + 1}$	$\frac{4}{2 + \sqrt{2}}$
A	0	1.04482	0.68629

When $s = \frac{2\sqrt{2}}{2\sqrt{2} + 1}$, the area is a maximum. \square

12. Find the absolute max and the absolute min of

$$f(x) = \frac{3}{4}x^{4/3} - 15x^{1/3} \quad \text{on the interval } -1 \leq x \leq 8.$$

$$f'(x) = x^{1/3} - 5x^{-2/3} = \frac{x - 5}{x^{2/3}}.$$

$f' = 0$ for $x = 5$ and f' is undefined for $x = 0$. Both points are in the interval.

x	-1	8	0	5
$f(x)$	15.75	-18	0	-19.23723

The absolute max is at $x = -1$ and the absolute min is at $x = 5$. \square

13. Use a limit of a rectangle sum to find the exact area under $y = x^2 + 3x$ from $x = 0$ to $x = 1$.

Divide the interval $0 \leq x \leq 1$ up into n equal subintervals. Each subinterval has length $\Delta x = \frac{1}{n}$. I'll evaluate the function at the right-hand endpoints of the subintervals, which are

$$\frac{1}{n}, \frac{2}{n}, \frac{3}{n}, \dots, \frac{n-1}{n}, \frac{n}{n}.$$

The function values are

$$\left(\frac{1}{n}\right)^2 + 3\left(\frac{1}{n}\right), \left(\frac{2}{n}\right)^2 + 3\left(\frac{2}{n}\right), \dots, \left(\frac{n}{n}\right)^2 + 3\left(\frac{n}{n}\right).$$

The sum of the rectangle area is

$$\sum_{k=1}^n \left[\left(\frac{k}{n}\right)^2 + 3\left(\frac{k}{n}\right) \right] \cdot \frac{1}{n} = \frac{1}{n^3} \sum_{k=1}^n k^2 + \frac{3}{n^2} \sum_{k=1}^n k = \frac{1}{n^3} \cdot \frac{n(n+1)(2n+1)}{6} + \frac{3}{n^2} \cdot \frac{n(n+1)}{2}.$$

The exact area is

$$\lim_{n \rightarrow \infty} \left(\frac{1}{n^3} \cdot \frac{n(n+1)(2n+1)}{6} + \frac{3}{n^2} \cdot \frac{n(n+1)}{2} \right) = \frac{1}{3} + \frac{3}{2} = \frac{11}{6}. \quad \square$$

14. $f(x) = x^5 + 4x^3 + 17$, so $f(1) = 22$. What is $(f^{-1})'(22)$?

First, $f'(x) = 5x^4 + 12x^2$. Then

$$(f^{-1})'(22) = \frac{1}{f'(f^{-1}(22))} = \frac{1}{f'(1)} = \frac{1}{17}. \quad \square$$

15. Use the definition of the derivative as a limit to prove that $\frac{d}{dx} \frac{1}{x-4} = -\frac{1}{(x-4)^2}$.

$$\begin{aligned} f'(x) &= \lim_{h \rightarrow 0} \frac{f(x+h) - f(x)}{h} = \lim_{h \rightarrow 0} \frac{\frac{1}{x+h-4} - \frac{1}{x-4}}{h} = \lim_{h \rightarrow 0} \frac{\frac{x-4}{(x-4)(x+h-4)} - \frac{x+h-4}{(x-4)(x+h-4)}}{h} = \\ &= \lim_{h \rightarrow 0} \frac{\frac{(x-4) - (x+h-4)}{(x-4)(x+h-4)}}{h} = \lim_{h \rightarrow 0} \frac{\frac{-h}{(x-4)(x+h-4)}}{h} = \lim_{h \rightarrow 0} \frac{-h}{h(x-4)(x+h-4)} = \\ &= \lim_{h \rightarrow 0} \frac{-1}{(x-4)(x+h-4)} = -\frac{1}{(x-4)^2}. \quad \square \end{aligned}$$

16. Let

$$f(x) = \begin{cases} \frac{x+3}{6-x} & \text{if } x < 1 \\ 0.9 & \text{if } x = 1 \\ 3x^2 - 2.2 & \text{if } x > 1 \end{cases}.$$

Is f continuous at $x = 1$? Why or why not?

$$\lim_{x \rightarrow 1^-} f(x) = \lim_{x \rightarrow 1^-} \frac{x+3}{6-x} = \frac{4}{5} = 0.8.$$

$$\lim_{x \rightarrow 1^+} f(x) = \lim_{x \rightarrow 1^+} (3x^2 - 2.2) = 3 - 2.2 = 0.8.$$

The left and right-hand limits agree. Therefore,

$$\lim_{x \rightarrow 1} f(x) = 0.8.$$

However, $f(1) = 0.9$, so $\lim_{x \rightarrow 1} f(x) \neq f(1)$. Hence, f is not continuous at $x = 1$. \square

17. (a) Compute $\frac{d}{dx} \int_4^{x^6} \sqrt{2+t^2} dt$.

$$\frac{d}{dx} \int_4^{x^6} \sqrt{2+t^2} dt = \frac{dx^6}{dx} \frac{d}{dx^6} \int_4^{x^6} \sqrt{2+t^2} dt = (6x^5) \sqrt{2+(x^6)^2} = 6x^5 \sqrt{2+x^{12}}. \quad \square$$

(b) Compute $\int \left(\frac{d}{dx} \sqrt[3]{x^2+1} \right) dx$.

$$\int \left(\frac{d}{dx} \sqrt[3]{x^2+1} \right) dx = \sqrt[3]{x^2+1} + C. \quad \square$$

18. (a) Suppose that $f(3) = 5$ and $f'(x) = \frac{x^2}{x^2+16}$. Use differentials to approximate $f(2.99)$ to 5 places.

Use

$$f(x+dx) \approx f(x) + f'(x) dx.$$

$dx = 2.99 - 3 = -0.01$ and $f'(3) = \frac{9}{25} = 0.36$. Therefore,

$$f(2.99) \approx f(3) + f'(3) dx = 5 + (0.36)(-0.01) = 4.99640. \quad \square$$

(b) A differentiable function satisfies $\frac{dy}{dx} = e^x \cos 3x$ and $y(0) = 0.1$. Use differentials to approximate $y(0.02)$.

$dx = 0.02 - 0 = 0.02$; when $x = 0$, $\frac{dy}{dx} = e^0 \cos 0 = 1$. Therefore,

$$dy = \frac{dy}{dx} dx = (1)(0.02) = 0.02.$$

Hence,

$$y(0.02) \approx y(0) + dy = 0.1 + 0.02 = 0.12. \quad \square$$

19. Approximate the sum

$$\frac{3 + \sin 2}{1^2 + 1} + \frac{3 + \sin 3}{2^2 + 2} + \frac{3 + \sin 4}{3^2 + 3} + \cdots + \frac{3 + \sin 41}{40^2 + 40}$$

to 5 decimal places.

$$\frac{3 + \sin 2}{1^2 + 1} + \frac{3 + \sin 3}{2^2 + 2} + \frac{3 + \sin 4}{3^2 + 3} + \cdots + \frac{3 + \sin 41}{40^2 + 40} = \sum_{n=1}^{40} \frac{3 + \sin(n+1)}{n^2 + n} \approx 3.31192. \quad \square$$

20. Use 3 iterations of Newton's method starting at $x = 2$ to approximate a solution to $4 - x^2 = e^x$.

Write the equation as $4 - x^2 - e^x = 0$. Set $f(x) = 4 - x^2 - e^x$, so $f'(x) = -2x - e^x$.

x	$f(x)$	$f'(x)$
2.	-7.38906	-11.3891
1.35121	-1.68789	-6.56454
1.09409	-0.183505	-5.17465
1.05863	-0.00311343	-4.99968
1.05801	-9.46553×10^{-7}	-4.99664

The solution is approximately $x \approx 1.058$. \square

21. Find the absolute max and the absolute min of $y = x^3 - 12x + 5$ on the interval $0 \leq x \leq 5$.

The derivative is

$$y' = 3x^2 - 12 = 3(x^2 - 4) = 3(x - 2)(x + 2).$$

$y' = 0$ for $x = 2$ and $x = -2$; however, only $x = 2$ is in the interval $0 \leq x \leq 5$. y' is defined for all x .

x	0	2	5
y	5	-11	70

The absolute max is at $x = 5$; the absolute min is at $x = 2$. \square

The best thing for being sad is to learn something. - MERLYN, in T. H. WHITE'S *The Once and Future King*