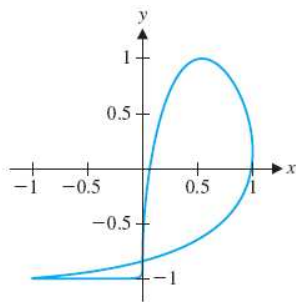


Quiz 3
Oct. 18, 2006

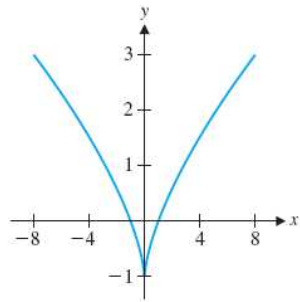
1. (8 pts) Find parametric equations for the line segment joining the points $(4, 7)$ and $(2, 3)$.
Ans: _____

2. (6 pts) Which one is not a polar coordinate representation for the rectangular points $(1, \sqrt{3})$.
A) $(2, \frac{\pi}{3})$, B) $(-2, \frac{4\pi}{3})$, C) $(-2, \frac{\pi}{3})$, D) $(-2, -\frac{2\pi}{3})$

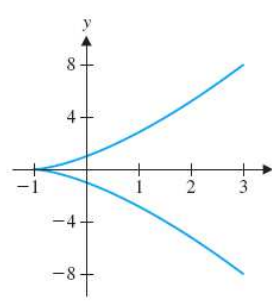
3. (6 pts) Which one is the graph of $\begin{cases} x = t^3, \\ y = t^2 - 1 \end{cases}$



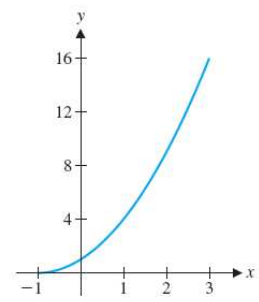
(A)



(B)



(C)



(D)